



# IL PROGETTO FEEM SI: Principali Risultati

Fabio Eboli

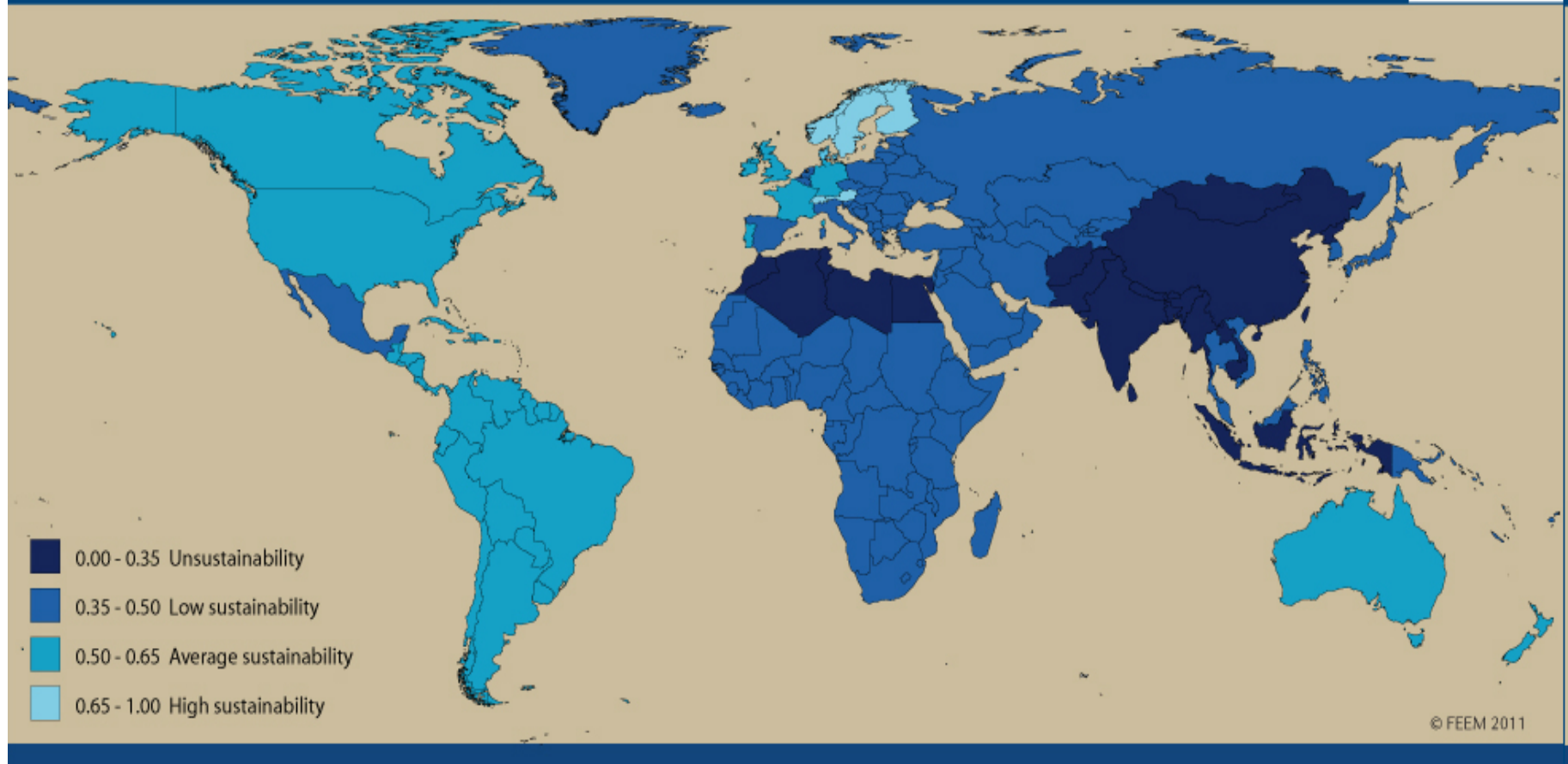
Fondazione Eni Enrico Mattei

*MILANO, 1 Dicembre 2011*



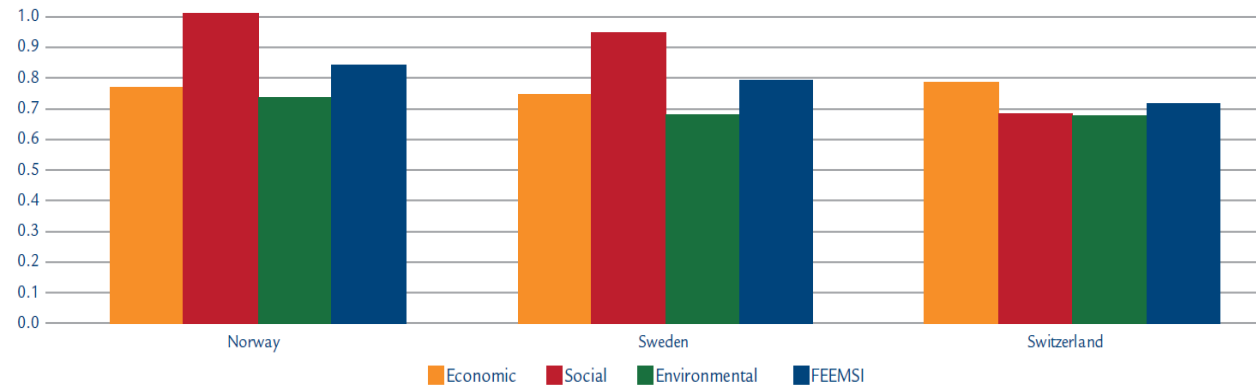
# MAPPE SOSTENIBILITA'

## FEEM Sustainability Index - 2011

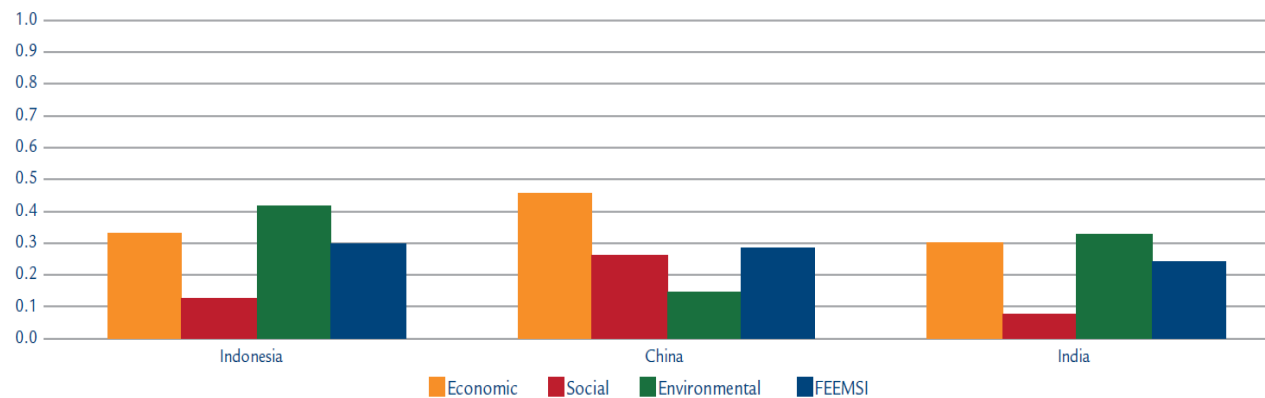


# MIGLIORI E PEGGIORI

## Primi tre Paesi nel 2011



## Ultimi tre Paesi nel 2011

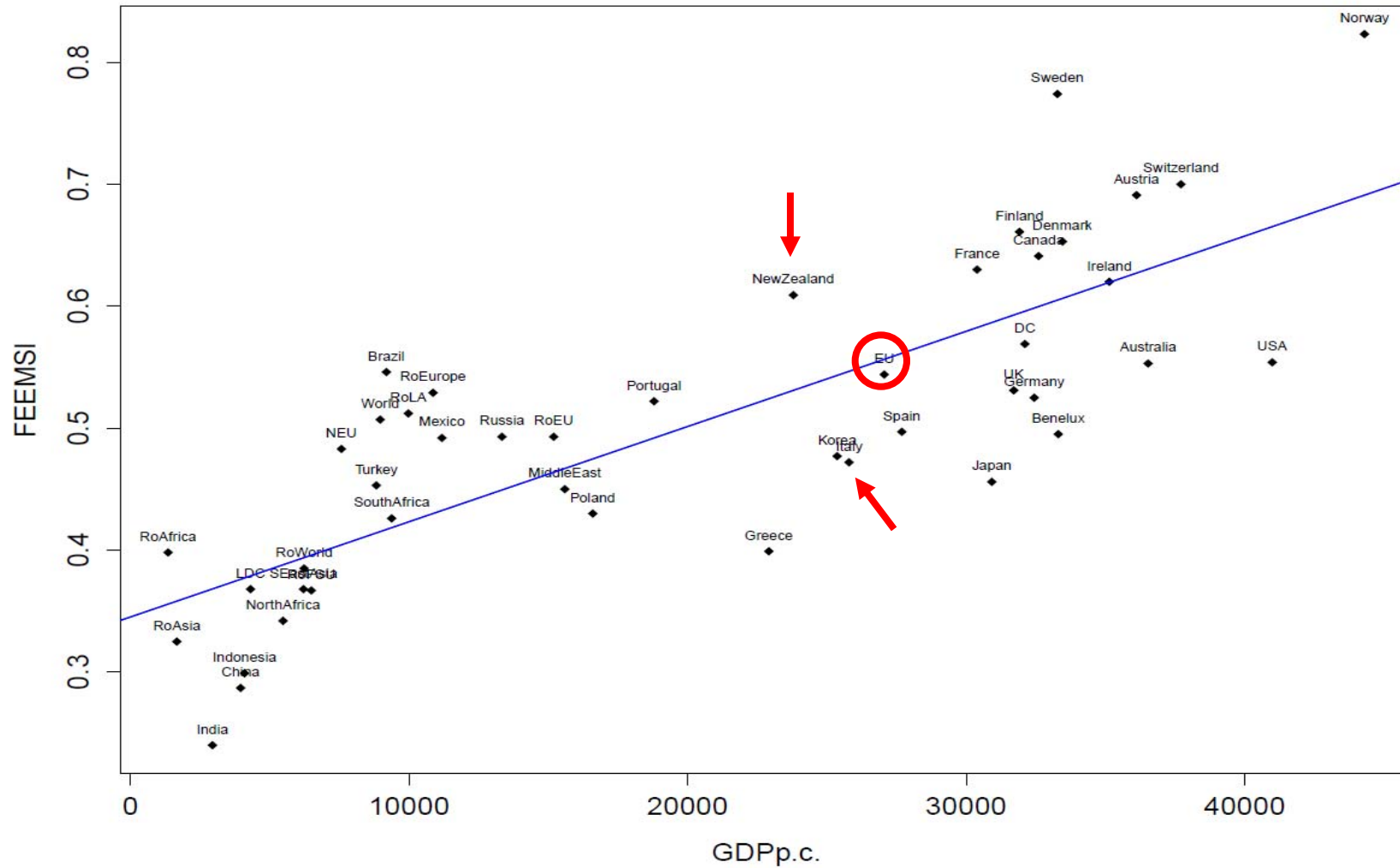


# FEEM SI vs PIL in 2011

GDP p.c. Ranking	Country	FEEM SI Ranking
1	Norway	1
2	USA	11
3	Switzerland	3
4	Australia	12
5	Austria	4
6	Ireland	9
7	Denmark	6
8	Benelux	20
9	Sweden	2
10	Canada	7
11	Germany	16
12	Finland	5
13	UK	14
14	Japan	26
15	France	8
16	Spain	19
17	Italy	25
18	Korea	24
19	NewZealand	10
20	Greece	31

GDP p.c. Ranking	Country	FEEM SI Ranking
21	Portugal	17
22	Poland	29
23	MiddleEast	28
24	RoEU	22
25	Russia	21
26	Mexico	23
27	RoEurope	15
28	RoLA	18
29	SouthAfrica	30
30	Brazil	13
31	Turkey	27
32	RoFSU	35
33	RoWorld	33
34	SEastAsia	34
35	NorthAfrica	36
36	Indonesia	38
37	China	39
38	India	40
39	RoAsia	37
40	RoAfrica	32

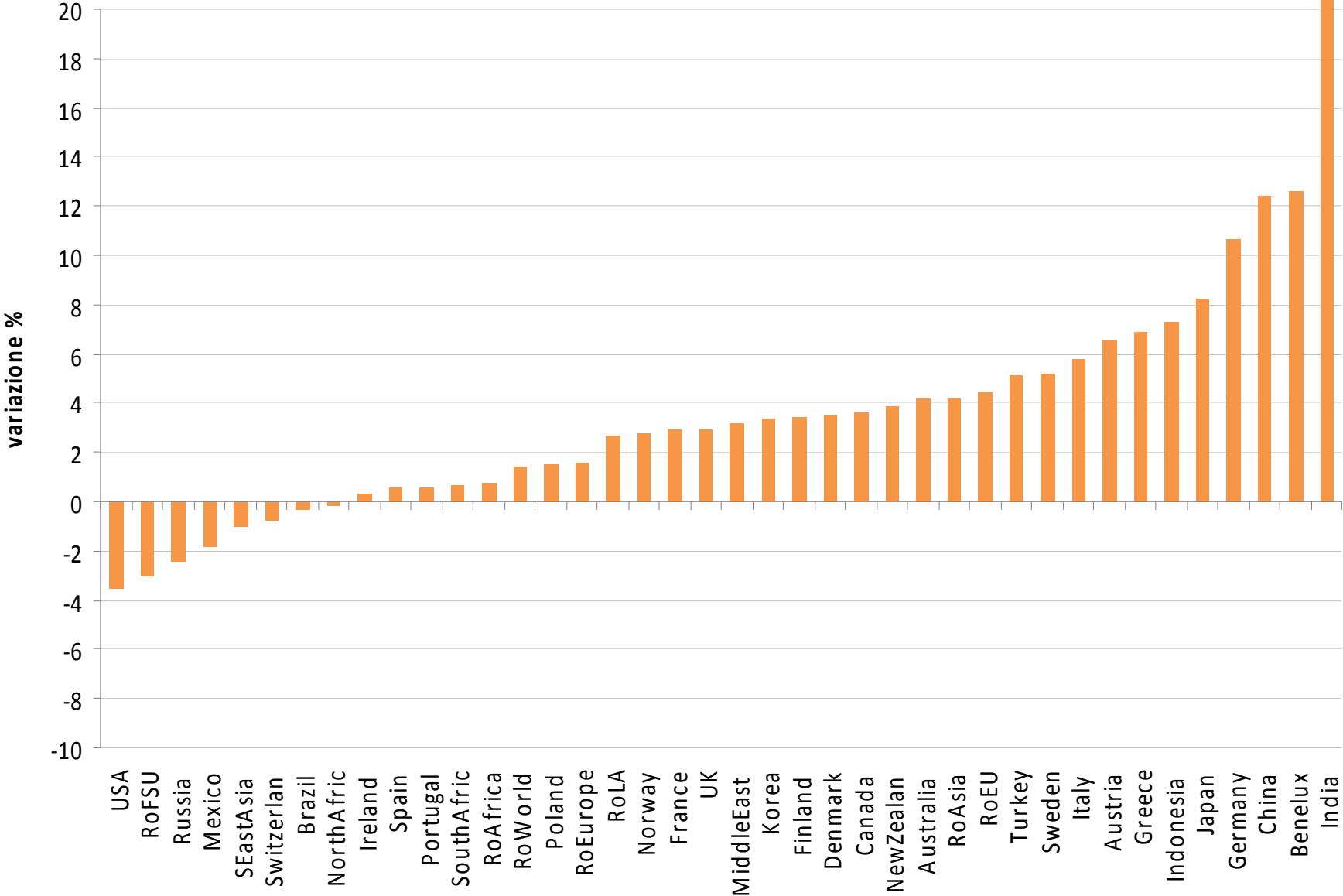
# FEEM SI vs PIL in 2011



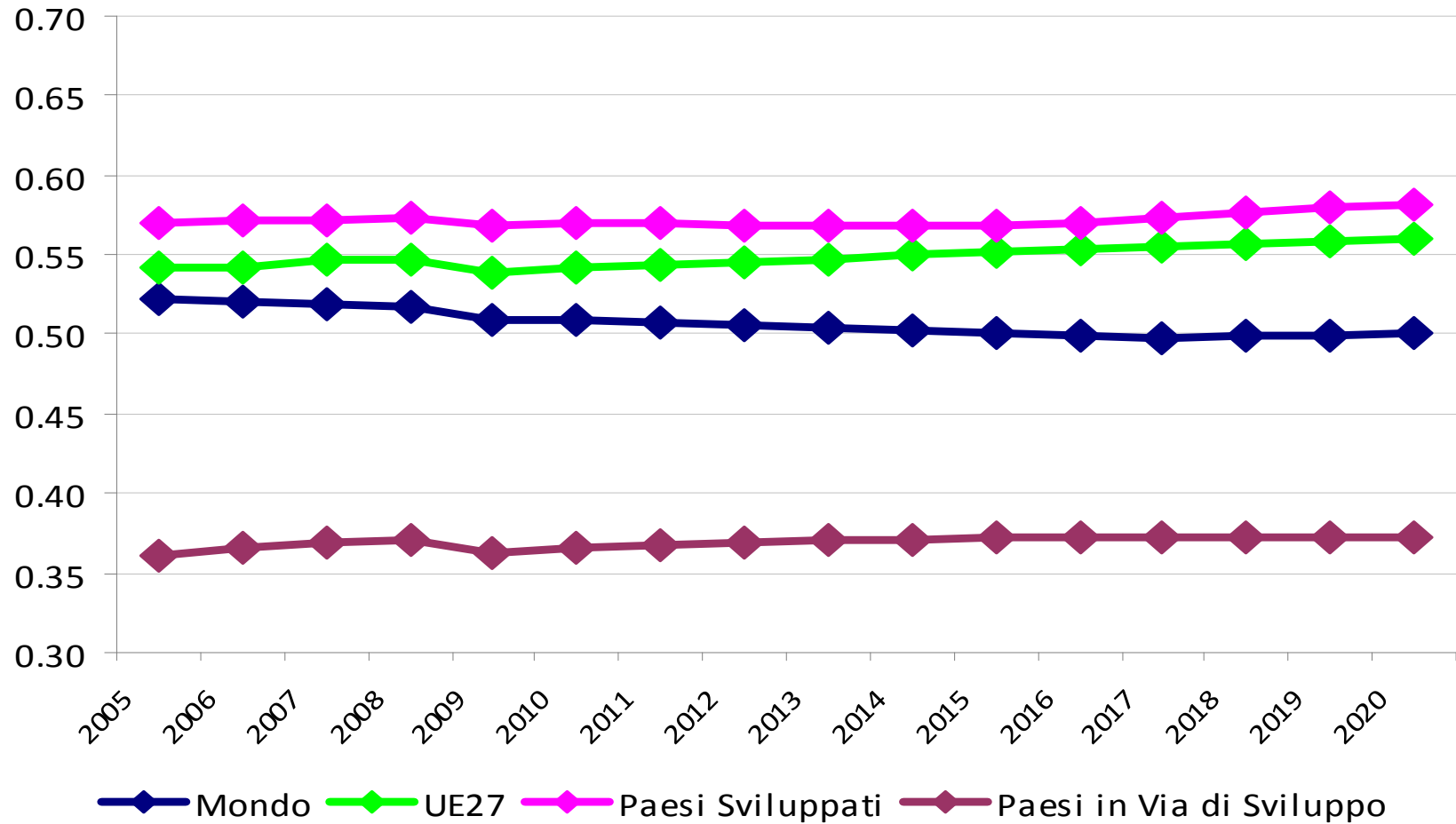
# SCENARIO DI BASE

Variabile	Fonte di riferimento
<b>Popolazione</b>	UN World Population Prospect (2010 revision) – medium fertility variant
<b>Prezzi combustibili fossili</b>	Eurelectric (2010)
<b>PIL</b>	2005-2009 = World Bank (WDI 2010) 2010-2020 = MMC_G10 scenario Med Pop - Medium Growth - Fast Convergence (Conv) developed within the FP7 RoSE project + World Economic Outlook 2010 (IMF, 2010) for downscaling at country level
<b>Intensità energetica</b>	2005-2009 = IEA (2010) 2010-2020 = endogena
<b>Emissioni CO<sub>2</sub></b>	2005-2009 = IEA (2010) 2010-2020 = endogene
<b>Debito Pubblico</b>	IMF (2010)

# 2020 vs 2011



# LA SOSTENIBILITA' NEL TEMPO





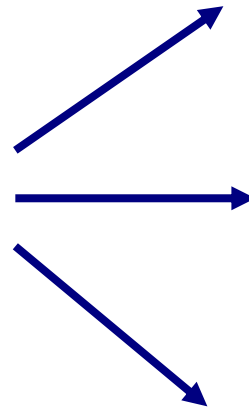
# SCENARI DI POLICY

*Politica Ambientale*



- *Politica Climatica*
- *Politica Idrica*

*Politica per lo Sviluppo Sostenibile*



- *Politica R&S*

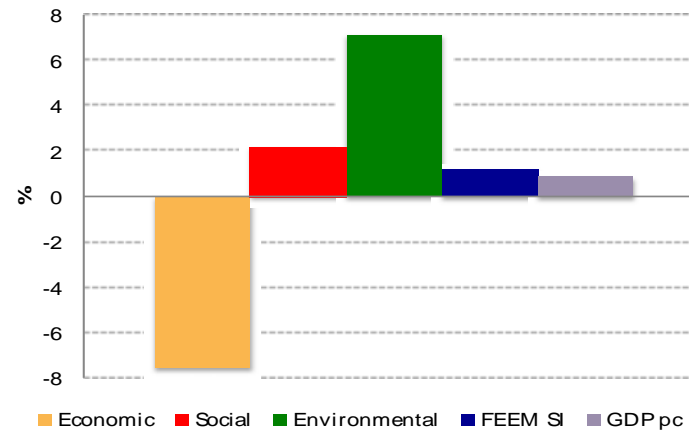
*Politica Sociale*



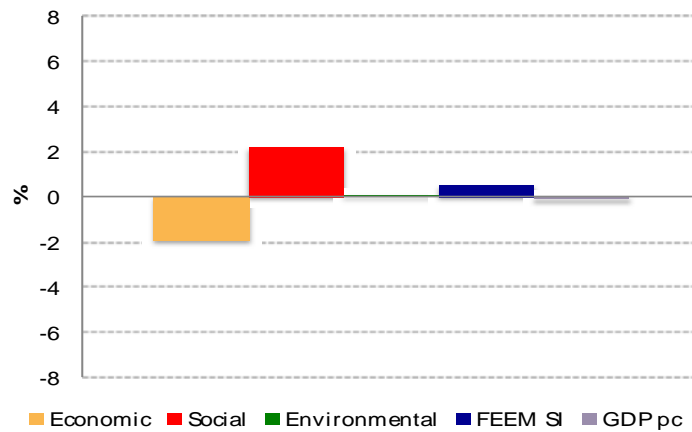
- *Politica Educativa*
- *Politica Sanitaria*

# EFFETTI DELLE POLITICHE: Mondo

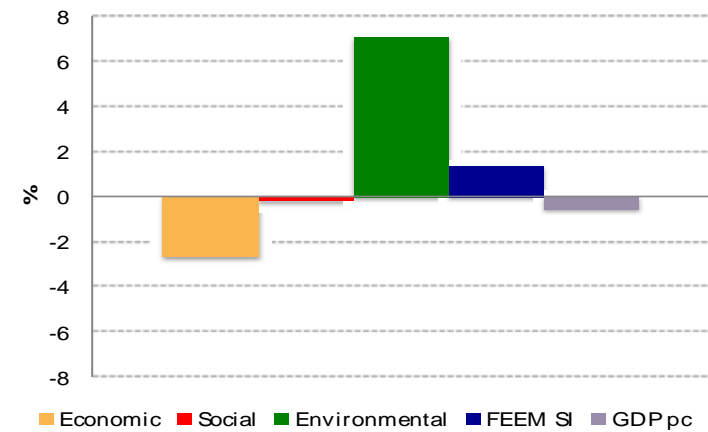
SD POLICY vs. BASELINE



SOCIAL POLICY vs. BASELINE

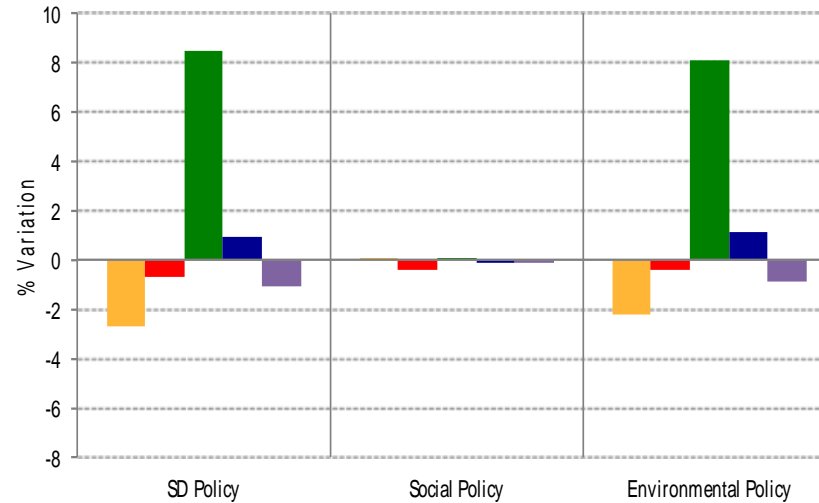


ENV POLICY vs. BASELINE

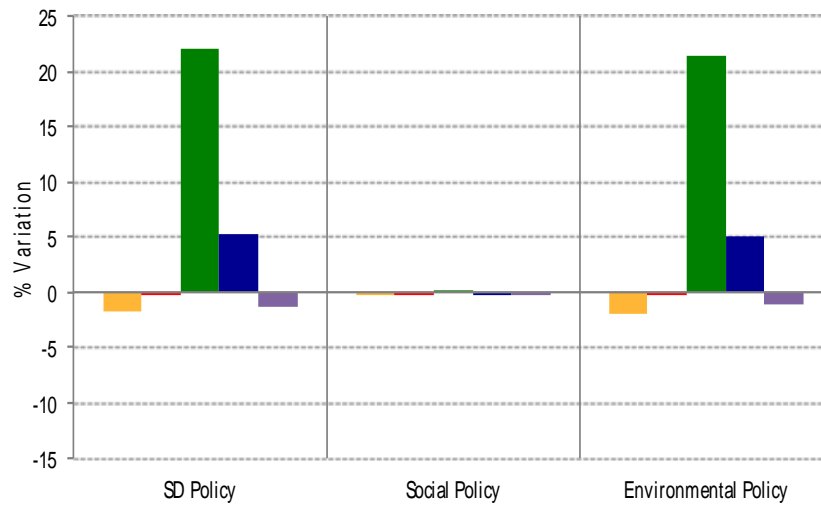


# EFFETTI DELLE POLITICHE: Aggregati

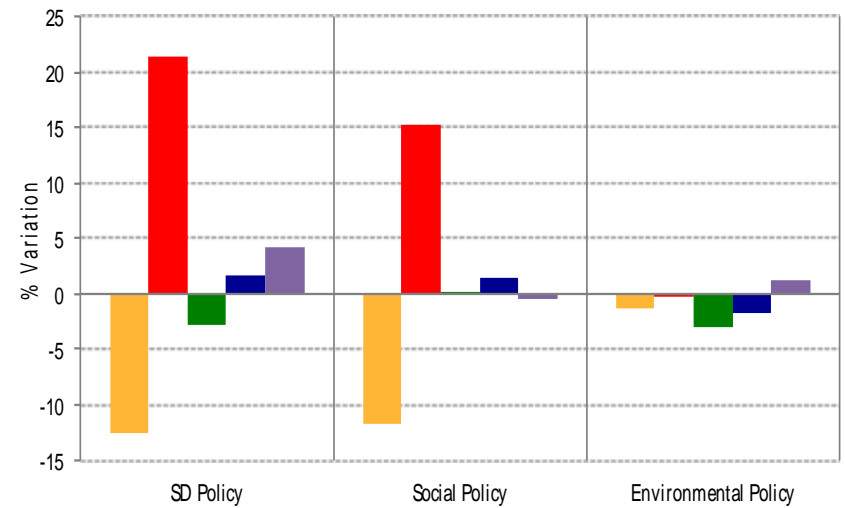
EU27



Paesi Sviluppati

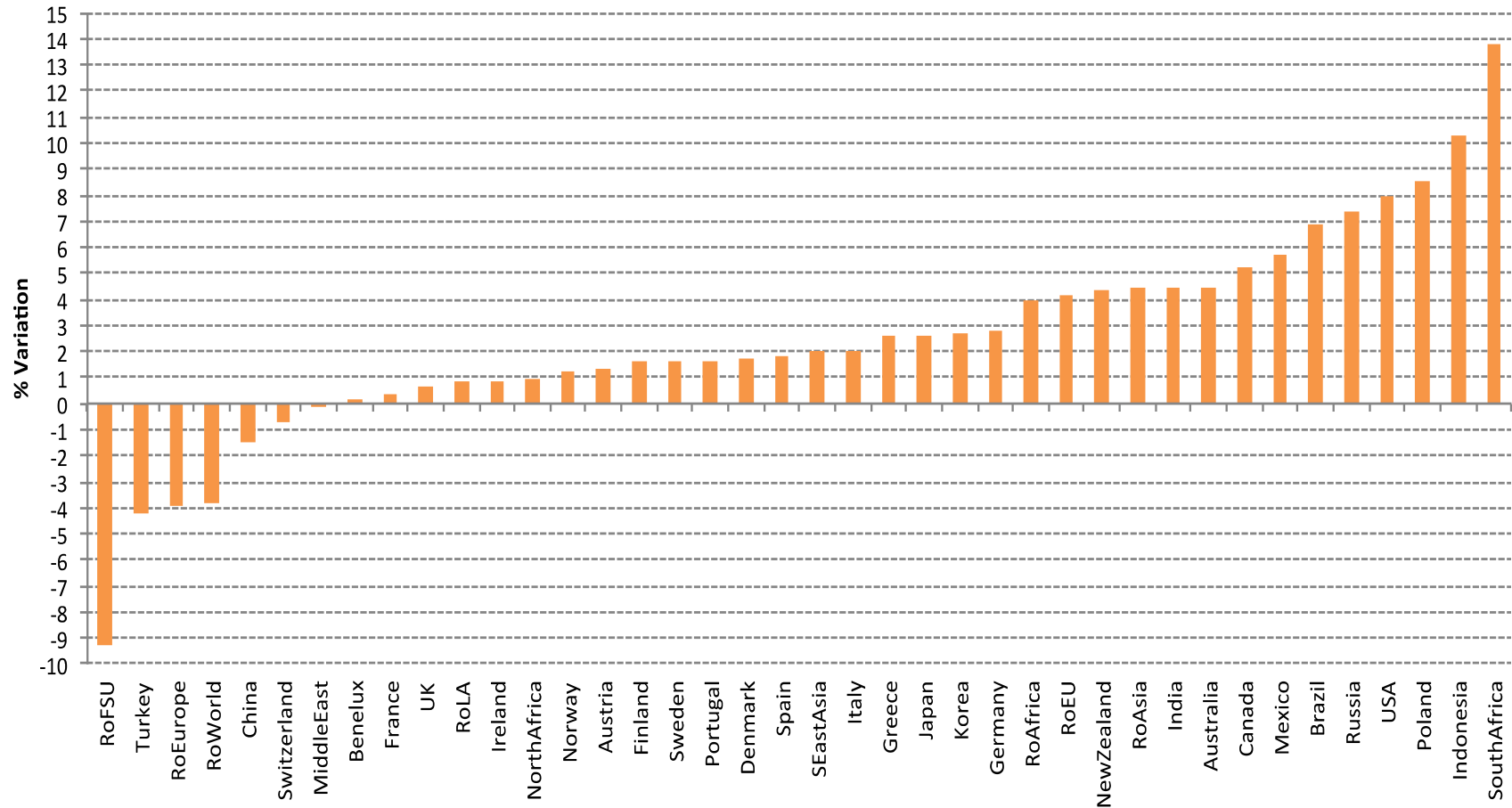


Paesi in Via di Sviluppo



# EFFETTI DELLE POLITICHE: Nazioni/Regioni

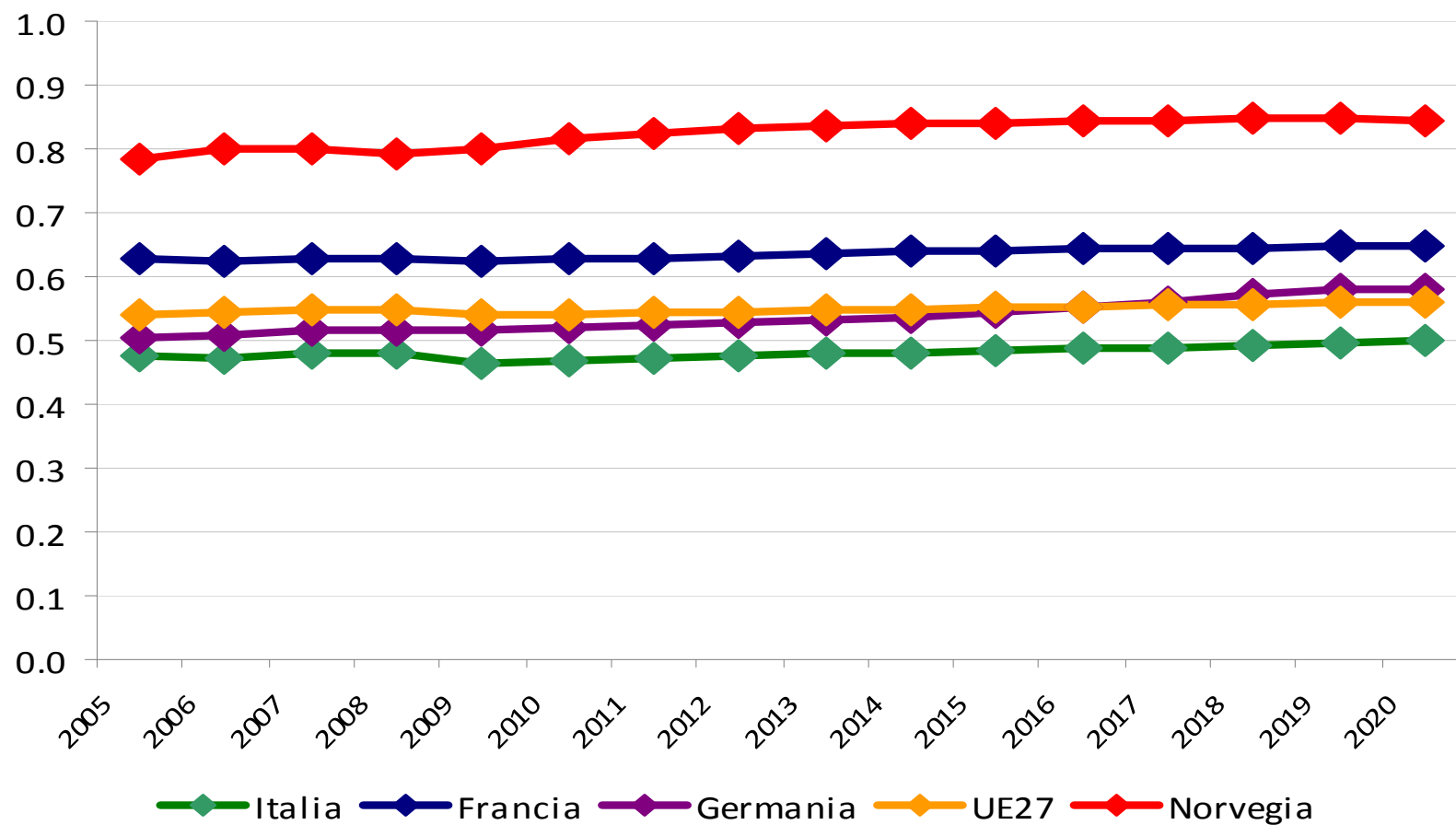
## SD POLICY vs BASELINE



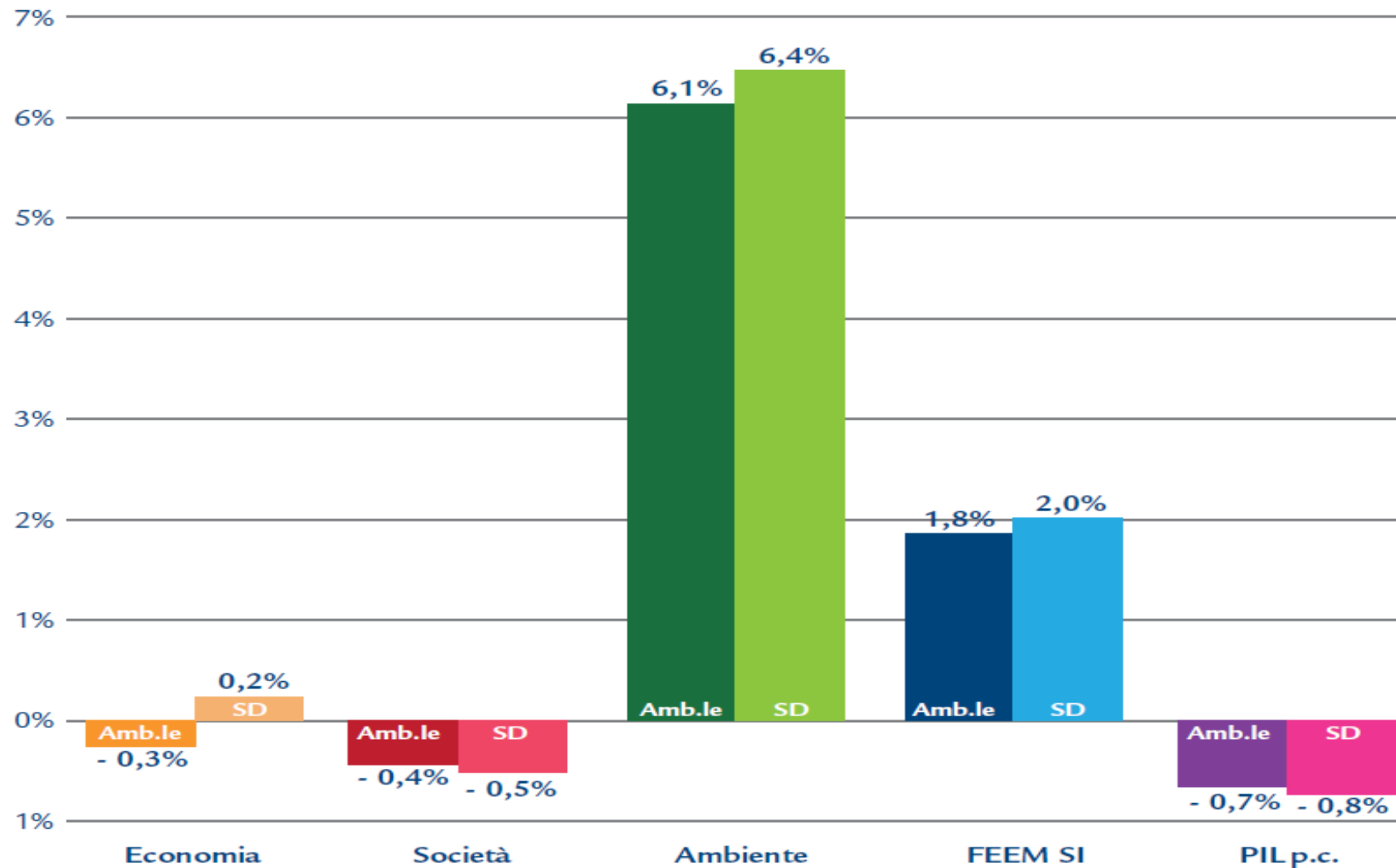
## FOCUS SU ITALIA: scenario di base

	Valore 2011	Posizione in classifica 2011
<b>FEEM SI</b>	0,472	25
<b>Economia</b>	0,404	30
<b>Società</b>	0,559	20
<b>Ambiente</b>	0,446	22

# FOCUS SU ITALIA: scenario di base



# FOCUS SU ITALIA: scenari di policy



# IL TEAM DI RICERCA

---

## **Coordinatore**

Carlo Carraro

## **Team Leader**

Silvio Giove

## **Ricercatori**

Francesco Bosello  
Lorenza Campagnolo  
Caterina Cruciani  
Fabio Eboli  
Elisa Lanzi  
Ramiro Parrado  
Roberta Pierfederici  
Mehmet Pinar  
Elisa Portale

## **Web Master**

Irene Bellin  
Paolo Gittoi

## **Progetto Grafico**

Renato Dalla Venezia

## **Gestione e Comunicazione**

Monica Eberle  
Alessandra Gorla





[www.feemsi.org](http://www.feemsi.org)

### **Milano**

Palazzo delle Stelline  
Corso Magenta 63  
20123 Milano, Italia  
Tel: +39 02.520.36934  
Fax: +39 02.520.36946  
letter@feem.it

### **Venezia**

Isola di San Giorgio Maggiore 8  
30124 Venezia, Italia  
Tel: +39 041.270.0411  
Fax: +39 041.270.0412  
venezia@feem.it

### **Viggiano**

Via del Convento 16  
85059 Viggiano (PZ) Italia  
Tel: +39 0975.350.729  
Fax: +39 0975.350.729  
viggiano@feem.it

